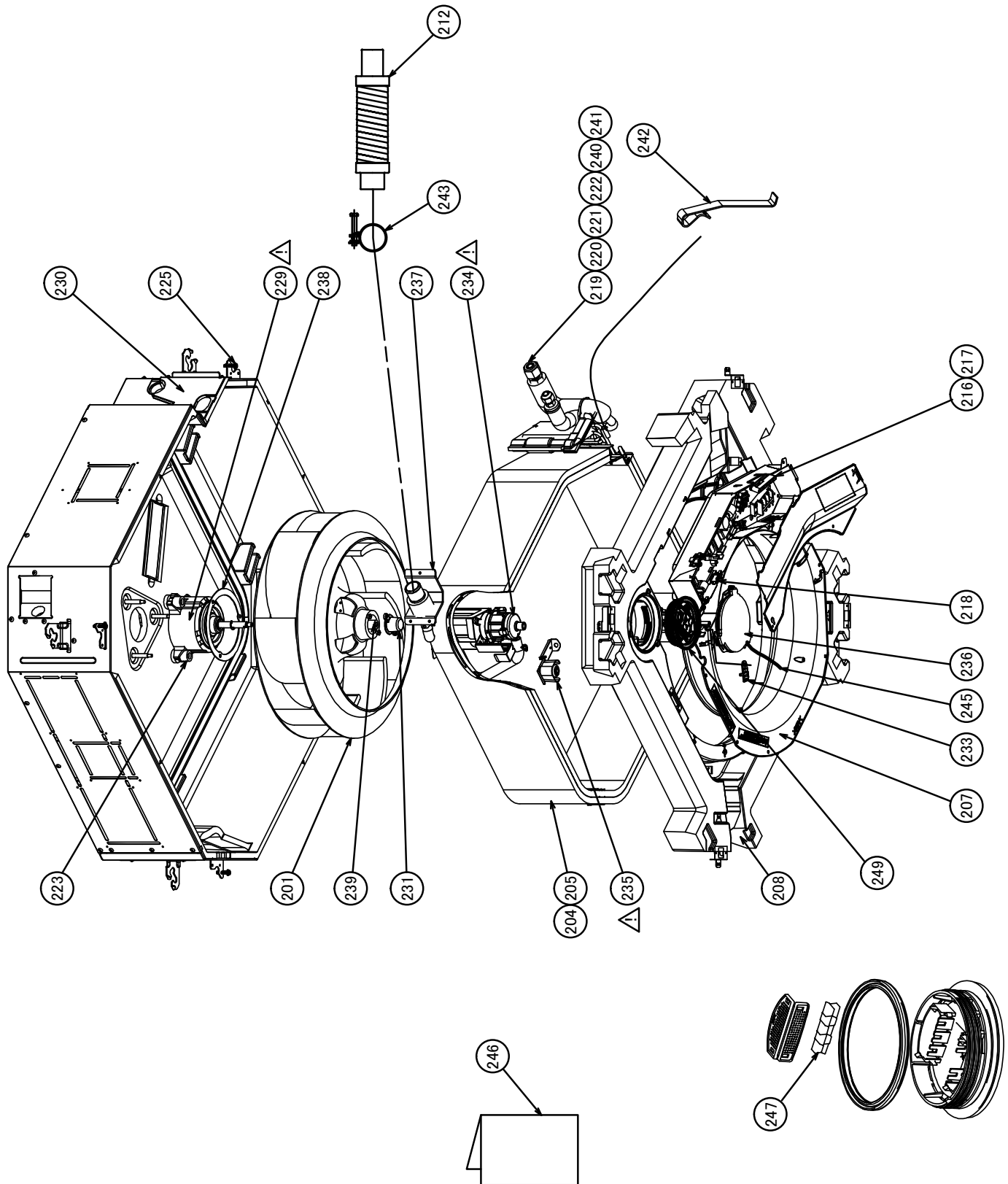


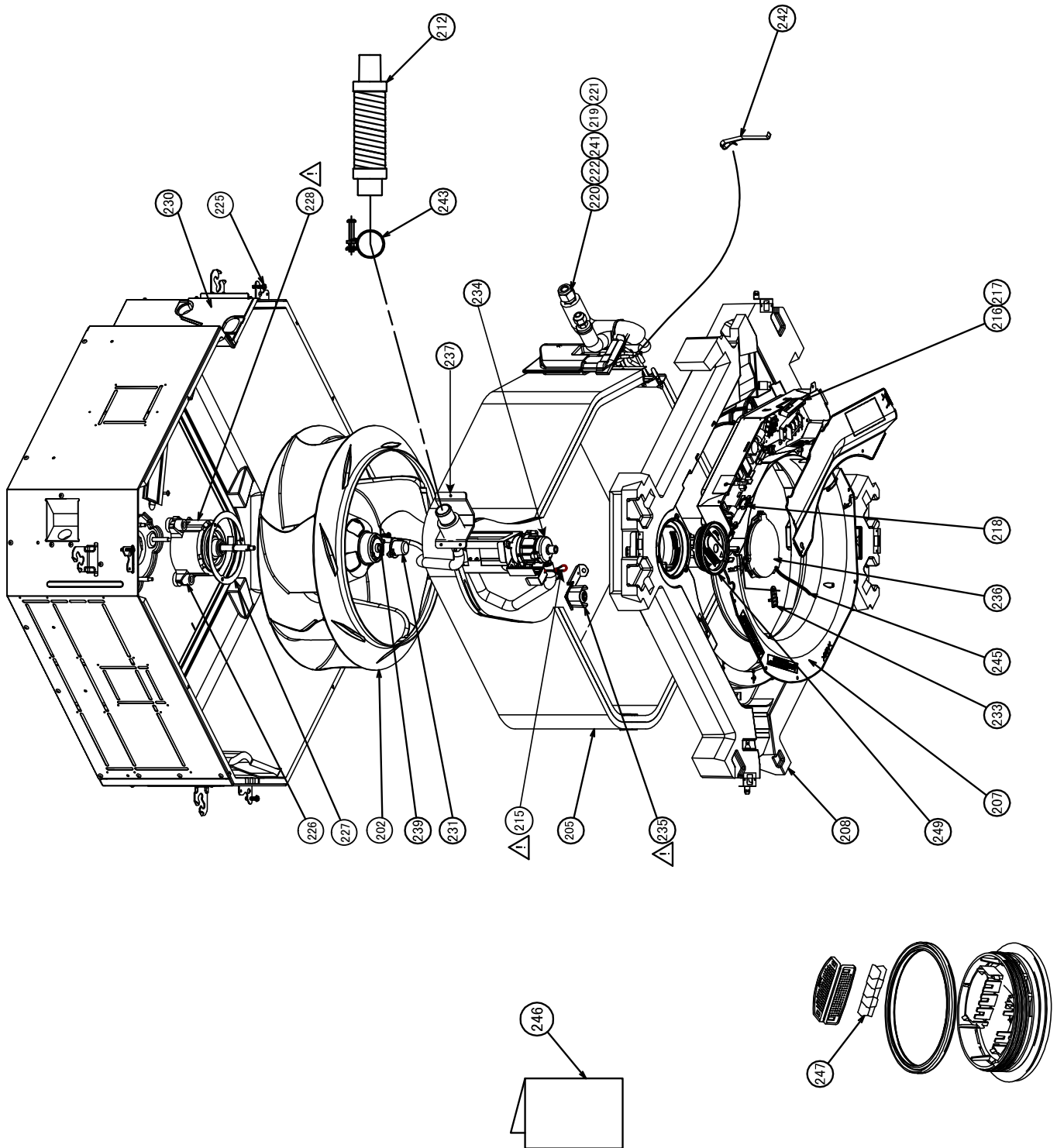
### 11. EXPLODED VIEWS AND PARTS LIST

#### 11-1. RAV-RM561UTP-E, RM561UTP-TR, RM801UTP-E, RM801UTP-TR



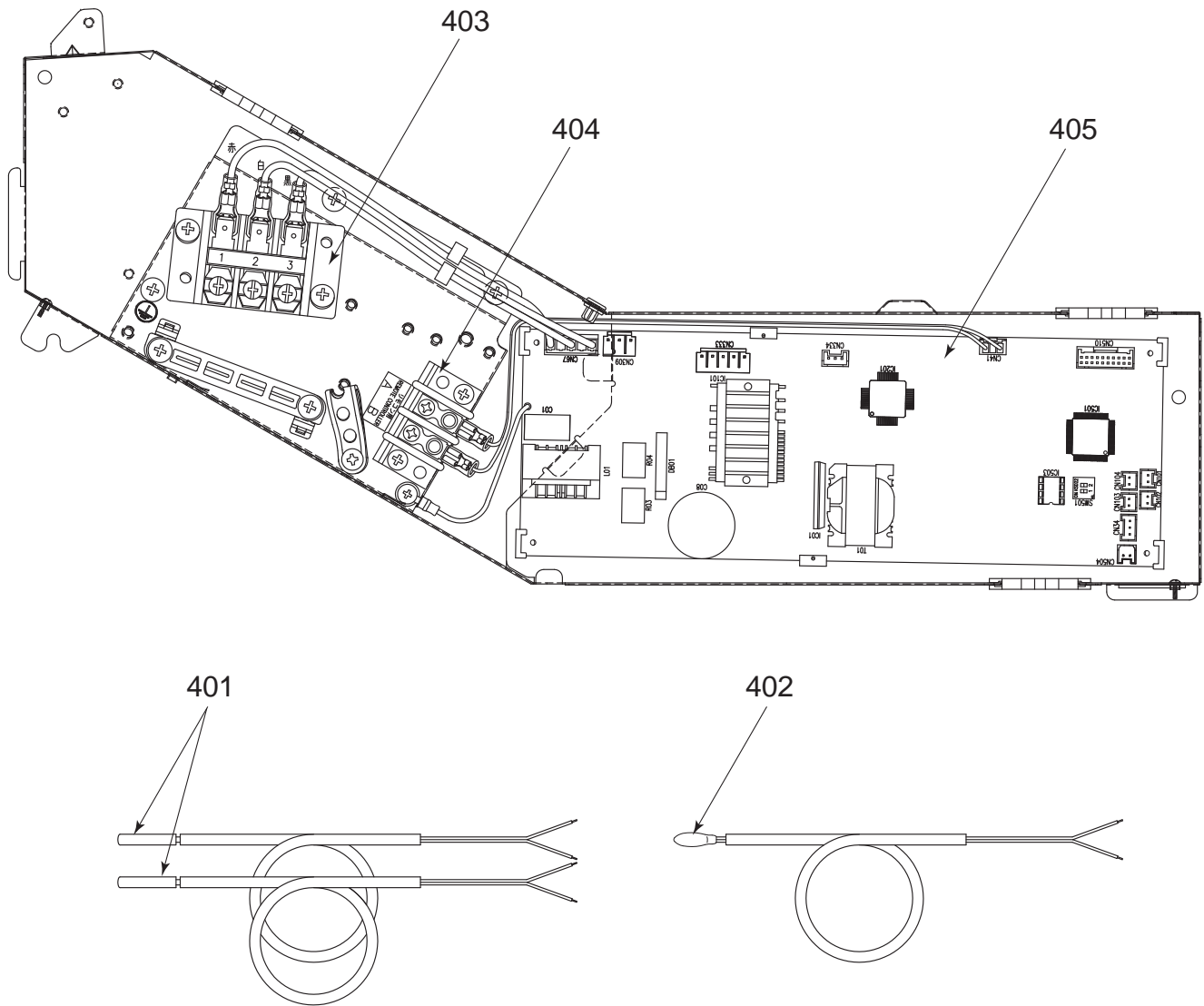
Ref.No.	Part No.	Description	RAV-RM			
			561UTP-E	561UTP-TR	801UTP-E	801UTP-TR
201	43T20335	FAN, ASSY TURB	1	1	1	1
204	43T44609	REFRIGERANT CYCLE ASSEMBLY	1	1		
205	43T44610	REFRIGERANT CYCLE ASSEMBLY			1	1
207	43T22322	BELL MOUTH	1	1	1	1
208	43T72320	PAN ASSY, DRAIN	1	1	1	1
212	43T70315	HOSE, DRAIN	1	1	1	1
215	43T83307	BAND, HOSE	1	1	1	1
216	43T63348	CLAMP, DOWN	1	1	1	1
217	43T63349	CLAMP, UP	1	1	1	1
218	43T63347	CLAMP, WIRE	4	4	4	4
219	43T97322	NUT, FLARE, 1/2 IN	1	1		
219	43T97321	NUT, FLARE, 3/8 IN			1	1
220	43T97320	NUT, FLARE, 1/4 IN	1	1		
220	43T97323	NUT, FLARE, 5/8 IN			1	1
221	43T82338	SOCKET	1	1		
221	43T82337	SOCKET			1	1
222	43T82336	SOCKET	1	1		
222	43T82339	SOCKET			1	1
223	43T11323	RUBBER, CUSHION	3	3		
224	43T39352	PLATE, WIND			4	4
225	43T97315	SCREW, FIX PANEL	4	4	4	4
226	43T11324	RUBBER, CUSHION			3	3
227	43T97316	WASHER			1	1
229	43T21441	MOTOR, FAN, SWF-230-60-2R	1	1	1	1
230	43T04318	COVER ASSY	1	1	1	1
231	43T39353	CAP, NUT	1	1	1	1
233	43T19358	COVER, SENSOR	1	1	1	1
234	43T77301	PUMP ASSY, MDP-1401	1	1	1	1
235	43T51311	SWITCH ASSY, FLOAT, FS-0218-102	1	1	1	1
236	43T79319	LID ASSY, OUTSIDE	1	1	1	1
237	43T71303	SOCKET, ASSY DRAIN	1	1	1	1
238	43T97310	WASHER	3	3	3	3
239	43T97001	NUT	1	1	1	1
240	43T47333	BONNET, 12.70 DIA	1	1		
240	43T47332	BONNET, 9.52 DIA			1	1
241	43T47331	BONNET, 6.35 DIA	1	1		
241	43T47334	BONNET, 15.88 DIA			1	1
242	43T19333	HOLDER, SENSOR	2	2	2	2
243	43T83311	BAND, HOSE	1	1	1	1
245	43T83312	STRING	1	1	1	1
246	43T85713	OWNER'S MANUAL	1		1	
246	43T85714	OWNER'S MANUAL		1		1
247	43T79318	GLASS	1	1	1	1
249	43T79317	LID ASSY, INSIDE	1	1	1	1

11-2. RAV-RM1101UTP-E, RM1101UTP-TR, RM1401UTP-E, RM1401UTP-TR,  
RM1601UTP-E, RM1601UTP-TR



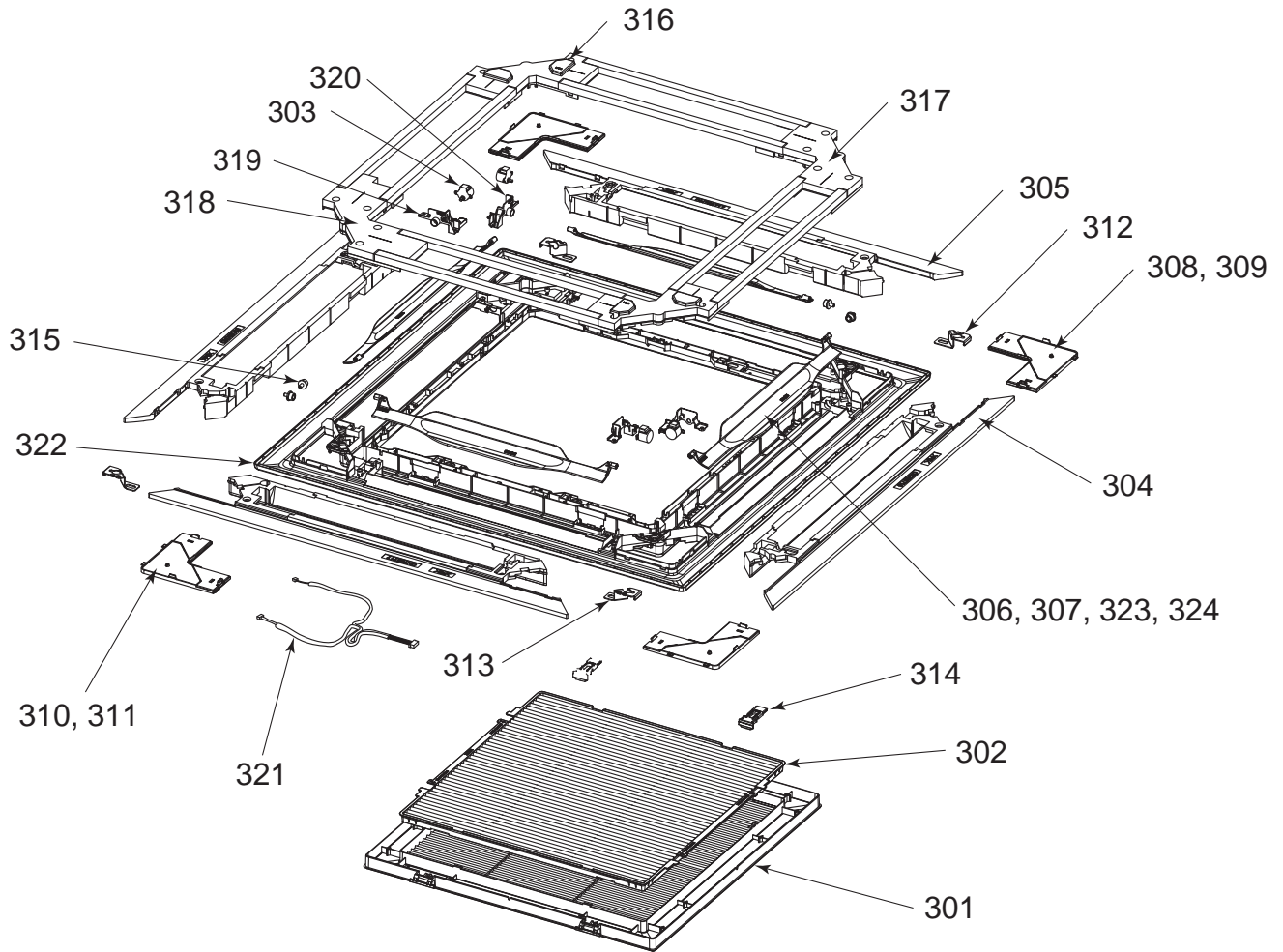
Ref.No.	Part No.	Description	RAV-RM					
			1101UTP-E	1101UTP-TR	1401UTP-E	1401UTP-TR	1601UTP-E	1601UTP-TR
202	43T20334	FAN, ASSY TURB	1	1	1	1	1	1
206	43T44611	REFRIGERANT CYCLE ASSEMBLY	1	1	1	1	1	1
207	43T22322	BELL MOUTH	1	1	1	1	1	1
208	43T72320	PAN ASSY, DRAIN	1	1	1	1	1	1
212	43T70315	HOSE, DRAIN	1	1	1	1	1	1
215	43T83307	BAND, HOSE	1	1	1	1	1	1
216	43T63348	CLAMP, DOWN	1	1	1	1	1	1
217	43T63349	CLAMP, UP	1	1	1	1	1	1
218	43T63347	CLAMP, WIRE	4	4	4	4	4	4
219	43T97321	NUT, FLARE, 3/8 IN	1	1	1	1	1	1
220	43T97323	NUT, FLARE, 5/8 IN	1	1	1	1	1	1
221	43T82337	SOCKET	1	1	1	1	1	1
222	43T82339	SOCKET	1	1	1	1	1	1
224	43T39352	PLATE, WIND	4	4	4	4	4	4
225	43T97315	SCREW, FIX PANEL	4	4	4	4	4	4
226	43T11324	RUBBER, CUSHION	3	3	3	3	3	3
227	43T97316	WASHER	1	1	1	1	1	1
228	43T21439	MOTOR, FAN, ICF-280-150-1	1	1	1	1	1	1
230	43T04318	COVER ASSY	1	1	1	1	1	1
231	43T39353	CAP, NUT	1	1	1	1	1	1
233	43T19358	COVER, SENSOR	1	1	1	1	1	1
234	43T77301	PUMP ASSY, MDP-1401	1	1	1	1	1	1
235	43T51311	SWITCH ASSY, FLOAT, FS-0218-102	1	1	1	1	1	1
236	43T79319	LID ASSY, OUTSIDE	1	1	1	1	1	1
237	43T71303	SOCKET, ASSY DRAIN	1	1	1	1	1	1
239	43T97001	NUT	1	1	1	1	1	1
241	43T47334	BONNET, 5/8 IN	1	1	1	1	1	1
242	43T19333	HOLDER, SENSOR	2	2	2	2	2	2
243	43T83311	BAND, HOSE	1	1	1	1	1	1
245	43T83312	STRING	1	1	1	1	1	1
246	43T85713	OWNER'S MANUAL	1	-	1	-	-	-
246	43T85714	OWNER'S MANUAL	-	1	-	1	-	-
246	43T85740	OWNER'S MANUAL	-	-	-	-	1	-
246	43T85741	OWNER'S MANUAL	-	-	-	-	-	1
247	43T79318	GLASS	1	1	1	1	1	1
249	43T79317	LID ASSY, INSIDE	1	1	1	1	1	1

Electric parts



Ref.No.	Part No.	Description	RAV-RM				
			561UTP-E 561UTP-TR	801UTP-E 801UTP-TR	1101UTP-E 1101UTP-TR	1401UTP-E 1401UTP-TR	1601UTP-E 1601UTP-TR
401	43T50347	SERVICE-SENSOR, Ø6	2	2	2	2	2
402	43T50476	SERVICE-SENSOR, TA	1	1	1	1	1
403	43T60427	SERV-TERMINAL, 3P, 20A	1	1	1	1	1
404	43T60434	TERMINAL BLOCK, 2P	1	1	1	1	1
405	43T6W326	ASM-PCB, MCC-1570	1	1	1	1	1

RBC-U31PG (W,WS)-E, RBC-U31PGS (W,WS)-E



Location No.	Part No.	Description	Model Name RBC-			
			U31PG (W)-E	U31PG (WS)-E	U31PGS (W)-E	U31PGS (WS)-E
301	43409207	Grille, Air Inlet	1	1	1	1
302	43480017	Air Filter, ABS + PPNET	1	1	1	1
303	4302D003	Motor, Louver, MP24Z3N	4	4	4	4
304	43407145	Outlet, Air Form, PS-F	2	2	2	2
305	43407146	Outlet, Air Form, PS-F	2	2	2	2
306	43409212	Louver, ABS	4			
307	43409216	Louver, ABS		4		
308	43401037	Cover, Panel Ass'y	3		3	
309	43401041	Cover, Panel Ass'y		3		3
310	43401043	Cover, Panel Ass'y	1		1	
311	43401047	Cover, Panel Ass'y		1		1
312	43407148	Plate, Fix, Panel	2	2	2	2
313	43407149	Plate, Fix, Panel	2	2	2	2
314	43407150	Hook, ABS	2	2	2	2
315	43407154	Cap, AXIS, POM	4	4	4	4
316	43403010	Cover Ass'y, Motor	2	2	2	2
317	43403011	Cover Ass'y	1	1	1	1
318	43403012	Cover Ass'y	1	1	1	1
319	43407155	Fix, Motor, ABS	2	2	2	2
320	43407156	Fix, Motor, ABS	2	2	2	2
321	43460125	Lead, Motor	1	1	1	1
322	43400077	Panel, Front, PS (W)	1	1	1	1
323	43109423	Louver, ABS			4	
324	43109424	Louver, ABS				4

## WARNINGS ON REFRIGERANT LEAKAGE

### Check of Concentration Limit

The room in which the air conditioner is to be installed requires a design that in the event of refrigerant gas leaking out, its concentration will not exceed a set limit.

The refrigerant R410A which is used in the air conditioner is safe, without the toxicity or combustibility of ammonia, and is not restricted by laws to be imposed which protect the ozone layer. However, since it contains more than air, it poses the risk of suffocation if its concentration should rise excessively. Suffocation from leakage of R410A is almost non-existent.

If a conditioner system is to be installed in a small room, select a suitable model and installation procedure so that if the refrigerant accidentally leaks out, its concentration does not reach the limit (and in the event of an emergency, measures can be made before injury can occur).

In a room where the concentration may exceed the limit, create an opening with adjacent rooms, or install mechanical ventilation combined with a gas leak detection device.

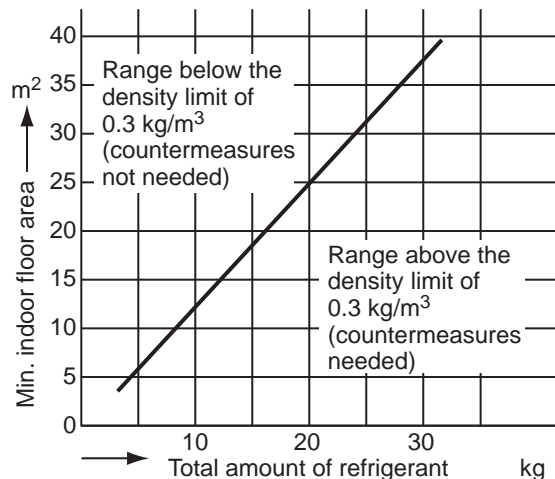
The concentration is as given below.

$$\frac{\text{Total amount of refrigerant (kg)}}{\text{Min. volume of the indoor unit installed room (m}^3\text{)}} \leq \text{Concentration limit (kg/m}^3\text{)}$$

The concentration limit of R410A which is used in air conditioners is 0.3 kg/m<sup>3</sup>.

### NOTE

The minimum indoor floor area compared with the amount of refrigerant is roughly as follows:  
(When the ceiling is 2.7m high)



# **Toshiba Carrier (Thailand) Co., Ltd.**

**144/9 MOO 5, BANGKADI INDUSTRIAL PARK, TIVANON ROAD, TAMBOL BANGKADI,  
AMPHUR MUANG, PATHUMTHANI 12000, THAILAND.**